



Diamond Interwoven *Grille*

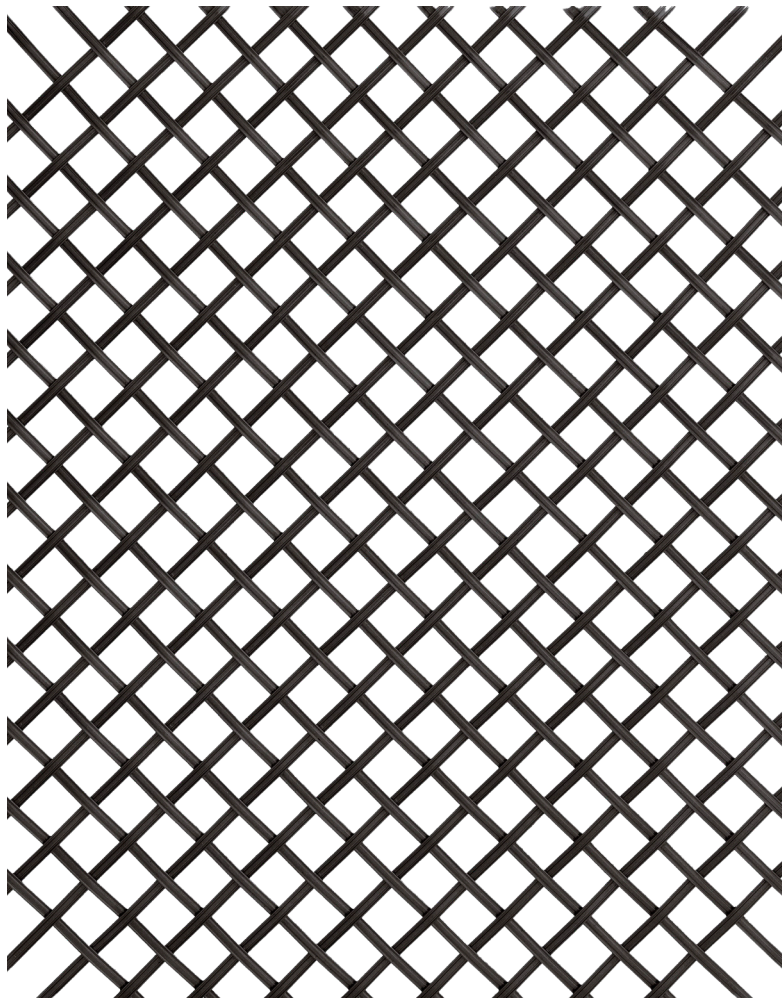
Inspired by traditional basket weave patterns and crafted from solid brass, our Diamond Interwoven Grille is ideal for cabinetry, radiator covers, entertainment units, and air conditioning covers throughout the home, each grille is made to your required panel sizes and is available in our 10 signature grille finishes.

Grille thickness: 3.4mm (excluding mesh)

Air flow: Air flow refers to the amount of open area within a grille, which directly affects ventilation performance for heating and air conditioning systems.

- 10mm Diamond – 36% (excluding mesh)
- 13mm Diamond – 44% (excluding mesh)
- 19mm Diamond – 51% (excluding mesh)
- 25mm Diamond – 75% (excluding mesh)

Please note that the addition of mesh backing will significantly reduce the overall air flow of the grille, additionally decreasing the air flow by approximately 58–65%, depending on the mesh selected.

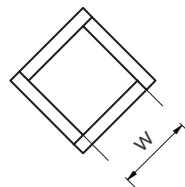


Diamond options

Available with four different diamond aperture sizes and two different bar thicknesses.

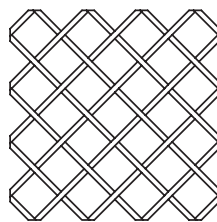
Width (W)

- 10mm 3/8"
- 13mm 1/2"
- 19mm 3/4"
- 25mm 1"

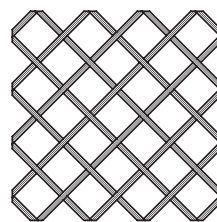


Wire options

Available in both plain and reeded wire styles, with a choice of 3mm or 5mm wire widths.



Plain wire

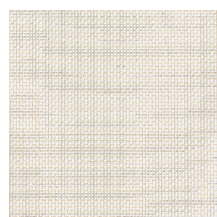


Reeded wire

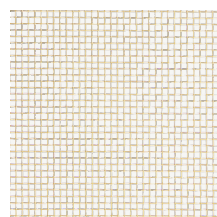
Mesh options

Our Mesh is commonly used as a backing for many of our decorative grilles, adding subtle texture while helping to conceal behind the panel.

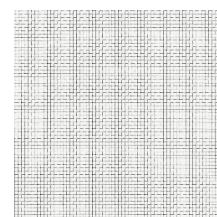
- Available cut to size
- Available in both Brass and Stainless Steel
- Finishes available on Brass material only



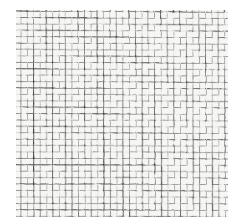
Fine Mesh Brass
Square holes 1mm internal
0.65mm thickness



Coarse Mesh Brass
Square holes 3mm internal
1.3mm thickness



Fine Mesh Stainless Steel
Square holes 1mm internal
0.65mm thickness



Coarse Mesh Stainless Steel
Square holes 3mm internal
1.3mm thickness