



# Double Rectangular Interwoven Grille

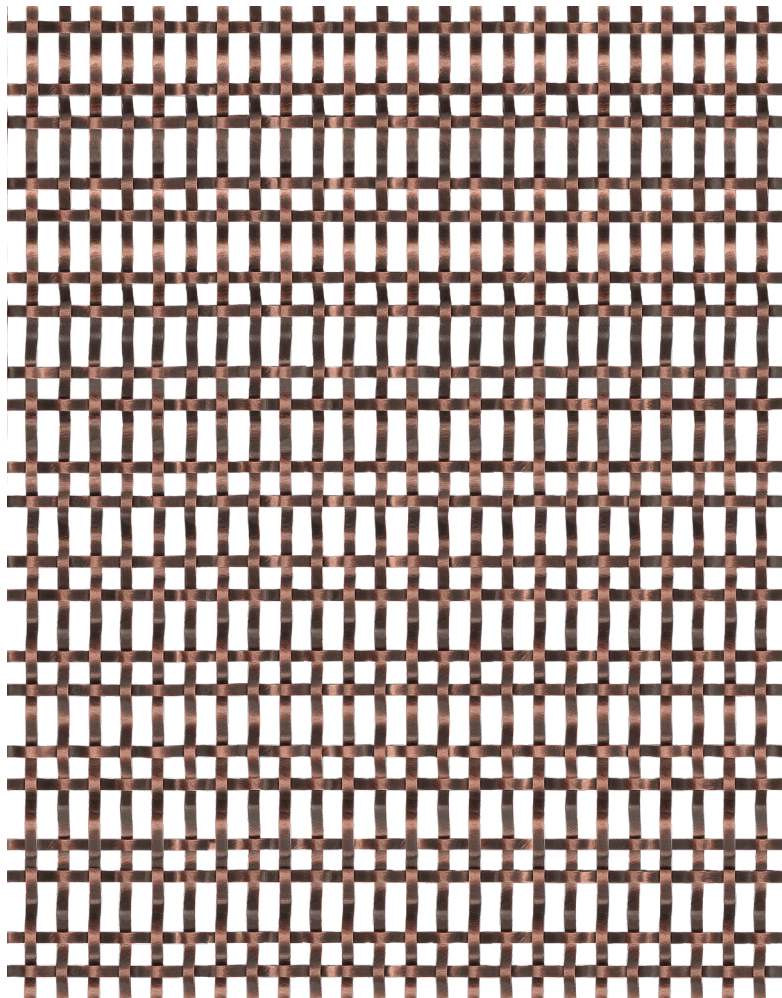
Featuring elongated woven detailing inspired by classic basket weave designs, our Double Rectangular Interwoven Grille is handcrafted from solid brass strips to form an elegant decorative panel. Ideal for cabinetry, radiator covers, entertainment units, and air conditioning covers, each grille is made to your required panel sizes and is available in our 10 signature grille finishes.

**Grille thickness:** 3.4mm (excluding mesh)

**Air flow:** Air flow refers to the amount of open area within a grille, which directly affects ventilation performance for heating and air conditioning systems.

13mm Rectangle – 44% (excluding mesh)

Please note that the addition of mesh backing will significantly reduce the overall air flow of the grille, additionally decreasing the air flow by approximately 58–65%, depending on the mesh selected.

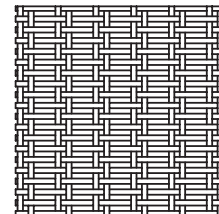
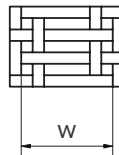


## Orientation

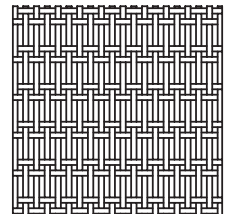
Available in two different orientations, horizontal or vertical.

Width (W)

25mm 1"



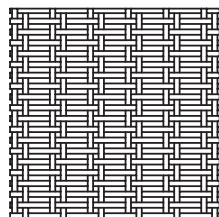
Horizontal



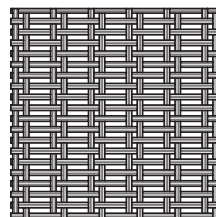
Vertical

## Wire options

Available in both plain and reeded wire styles with a 3mm width.



Plain wire



Reeded wire

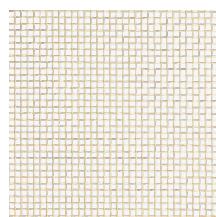
## Mesh options

Our Mesh is commonly used as a backing for many of our decorative grilles, adding subtle texture while helping to conceal behind the panel.

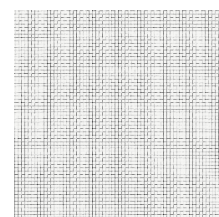
- Available cut to size
- Available in both Brass and Stainless Steel
- Finishes available on Brass material only



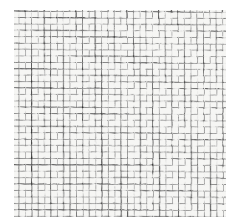
Fine Mesh Brass  
Square holes 1mm internal  
0.65mm thickness



Coarse Mesh Brass  
Square holes 3mm internal  
1.3mm thickness



Fine Mesh Stainless Steel  
Square holes 1mm internal  
0.65mm thickness



Coarse Mesh Stainless Steel  
Square holes 3mm internal  
1.3mm thickness