

## Elliptical Grille

Featuring a distinctive oval-inspired pattern originally associated with traditional radiator covers, our Elliptical Grille offers a refined decorative touch to both classic and contemporary interiors. Suitable for cabinetry, air conditioning covers, and entertainment systems, each grille is crafted from solid brass to your required panel sizes and is available in our 10 signature grille finishes.

**Grille thickness:** 3.2mm (excluding mesh)

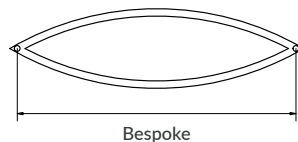
**Air flow:** Air flow refers to the amount of open area within a grille, which directly affects ventilation performance for heating and air conditioning systems.

Percentage of air flow is dependent on overall grille size.

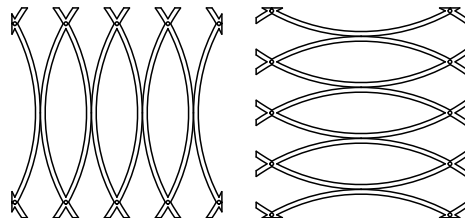
Please note that the addition of mesh backing will significantly reduce the overall air flow of the grille, additionally decreasing the air flow by approximately 58–65%, depending on the mesh selected.

### Orientation

Available in two different orientations with a bespoke width, each is made from a 3.2mm square section brass bar and fitted to hold in place with decorative pins.



Bespoke

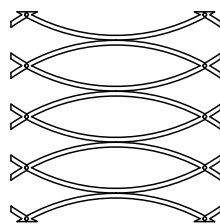


Horizontal

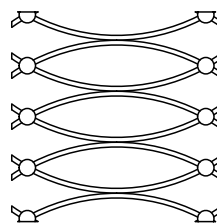
Vertical

### Rosette options

Available with a choice of plain or floral rosettes fitted to every cross-over. Grilles can also be supplied without rosettes, leaving the pin-heads visible for a more understated appearance. Bespoke mixed finish combinations may also be available upon request.



No rosettes



All rosettes

#### Horizontal

Minimum Length: 254mm Height x 305mm Width (10inch x 12inch)  
Maximum Length: 406mm Height x 1500mm Width (15inch x 59inch)

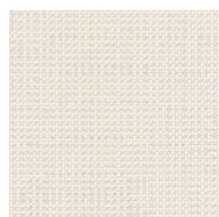
#### Vertical

Minimum Length: 305mm Height x 254mm Width (12inch x 10inch)  
Maximum Length: 1500mm Height x 406mm Width (59inch x 15inch)

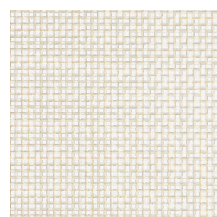
### Mesh options

Our Mesh is commonly used as a backing for many of our decorative grilles, adding subtle texture while helping to conceal behind the panel.

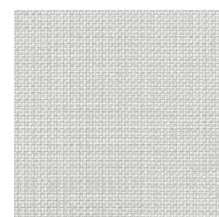
- Available cut to size
- Available in both Brass and Stainless Steel
- Finishes available on Brass material only



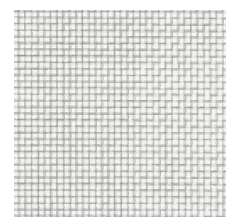
Fine Mesh Brass  
Square holes 1mm internal  
0.65mm thickness



Coarse Mesh Brass  
Square holes 3mm internal  
1.3mm thickness



Fine Mesh Stainless Steel  
Square holes 1mm internal  
0.65mm thickness



Coarse Mesh Stainless Steel  
Square holes 3mm internal  
1.3mm thickness