



Perforated Club Grille

Crafted from a 1mm solid brass sheet, our Perforated Club Grille showcases a bold repeating motif designed to create a statement decorative panel. Suitable for cabinetry, radiator covers, entertainment systems, and air conditioning covers, each grille is made to your required sizes and available in our 10 signature grille finishes, alongside polished brass unlacquered (PBUL) and polished brass lacquered (PBL).

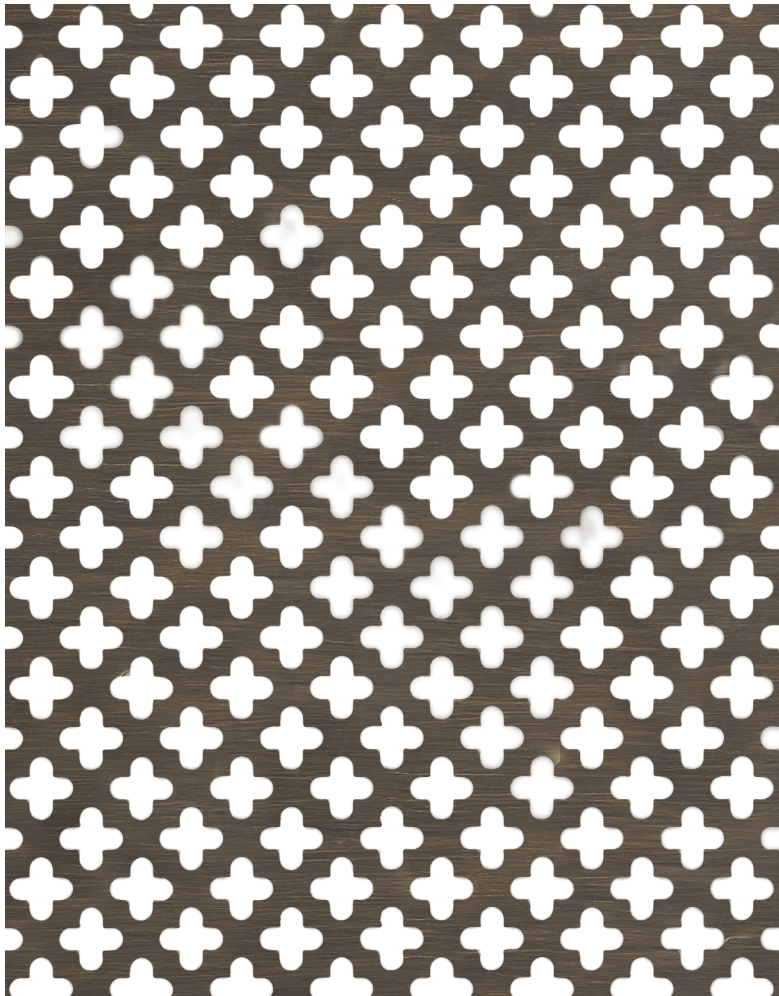
Grille thickness: 0.8mm (excluding mesh)

Air flow: Air flow refers to the amount of open area within a grille, which directly affects ventilation performance for heating and air conditioning systems.

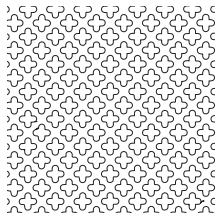
Small Club: 42% (excluding mesh)

Large Club: 50% (excluding mesh)

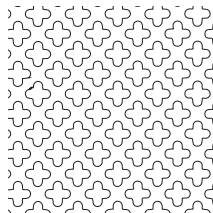
Please note that the addition of mesh backing will significantly reduce the overall air flow of the grille, additionally decreasing the air flow by approximately 58–65%, depending on the mesh selected.



Additional information



Small Club
6mm max width



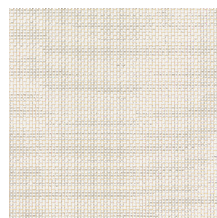
Large Club
19mm max width

Minimum: 40mm x 40mm (2inch x 2inch)
Maximum: 1730x840mm (68.5inch x 33inch)

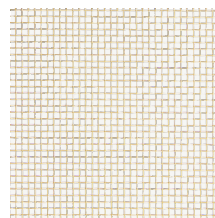
Mesh options

Our Mesh is commonly used as a backing for many of our decorative grilles, adding subtle texture while helping to conceal behind the panel.

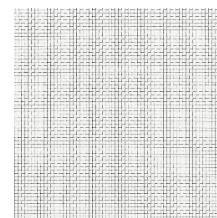
- Available cut to size
- Available in both Brass and Stainless Steel
- Finishes available on Brass material only



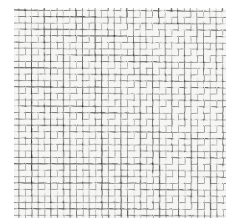
Fine Mesh Brass
Square holes 1mm internal
0.65mm thickness



Coarse Mesh Brass
Square holes 3mm internal
1.3mm thickness



Fine Mesh Stainless Steel
Square holes 1mm internal
0.65mm thickness



Coarse Mesh Stainless Steel
Square holes 3mm internal
1mm thickness