



Perforated Honeycomb Grille

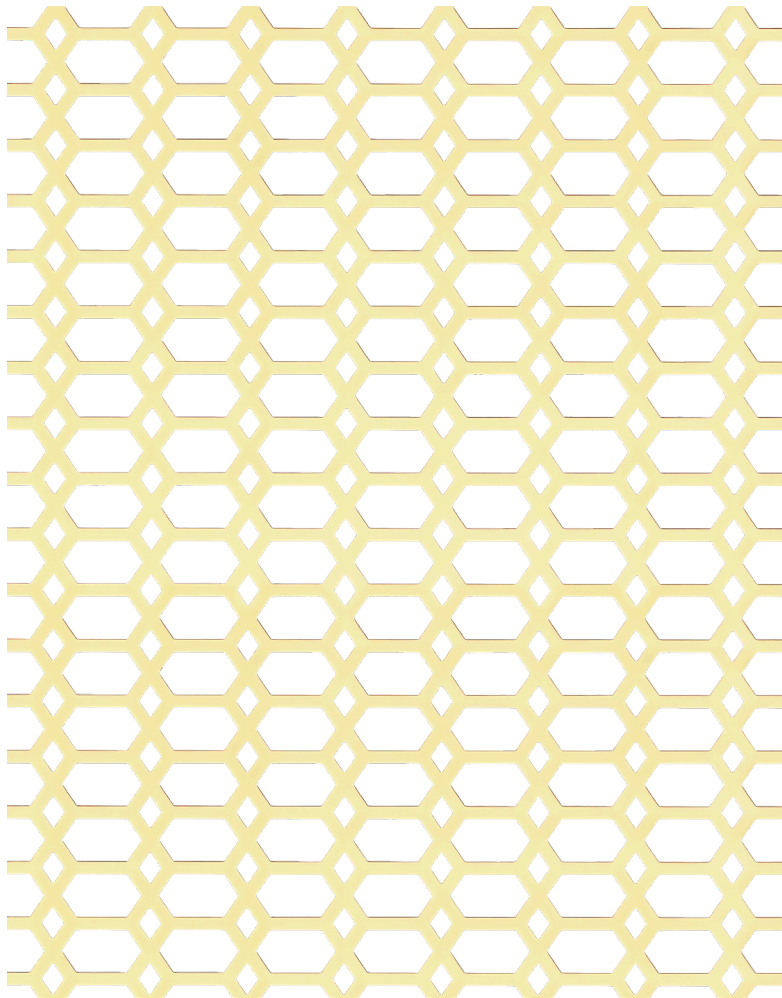
Crafted from a 1mm solid brass sheet, our Perforated Honeycomb Grille features a timeless hexagonal repeat pattern inspired by natural honeycomb structures. Ideal for cabinetry, radiator covers, entertainment systems, and air conditioning covers, each panel is made to size and available in our 10 signature grille finishes, alongside polished brass unlacquered (PBUL) and polished brass lacquered (PBL).

Grille thickness: 1mm (excluding mesh)

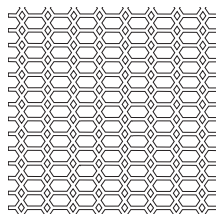
Air flow: Air flow refers to the amount of open area within a grille, which directly affects ventilation performance for heating and air conditioning systems.

60% (excluding mesh)

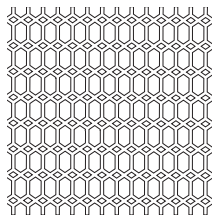
Please note that the addition of mesh backing will significantly reduce the overall air flow of the grille, additionally decreasing the air flow by approximately 58–65%, depending on the mesh selected.



Additional information



9.5mm internal lozenge
H9.5mm x W19.5mm
(Horizontal)



9.5mm internal lozenge
H19mm x W9.5mm
(Vertical)

Vertical

Minimum Length: 40mm x 40mm (2inch x 2inch)
Maximum Length: 840mm H1730mm x W(33inch x 68inch)

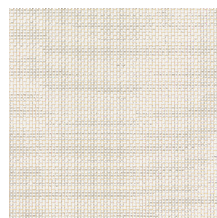
Horizontal

Minimum length 40mm x 40mm (2inch x 2inch)
Maximum Length H 1730mm x W840mm (68inch x 33inch)

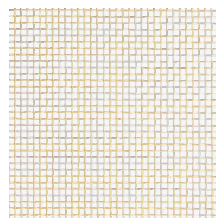
Mesh options

Our Mesh is commonly used as a backing for many of our decorative grilles, adding subtle texture while helping to conceal behind the panel.

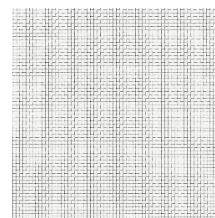
- Available cut to size
- Available in both Brass and Stainless Steel
- Finishes available on Brass material only



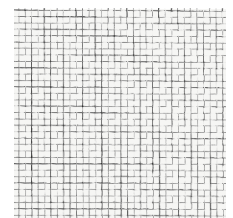
Fine Mesh Brass
Square holes 1mm internal
0.65mm thickness



Coarse Mesh Brass
Square holes 3mm internal
1.3mm thickness



Fine Mesh Stainless Steel
Square holes 1mm internal
0.65mm thickness



Coarse Mesh Stainless Steel
Square holes 3mm internal
1mm thickness