



Regency Diamond *Grille*

Inspired by original Victorian designs traditionally used for radiator covers, our Regency Diamond Grille brings timeless decorative detailing to traditional and contemporary interiors alike. Suitable for cabinetry, air conditioning covers, and entertainment systems, each grille is crafted from solid brass to your required panel sizes and is available in our 10 signature grille finishes.

Grille thickness: 3.2mm (excluding mesh)

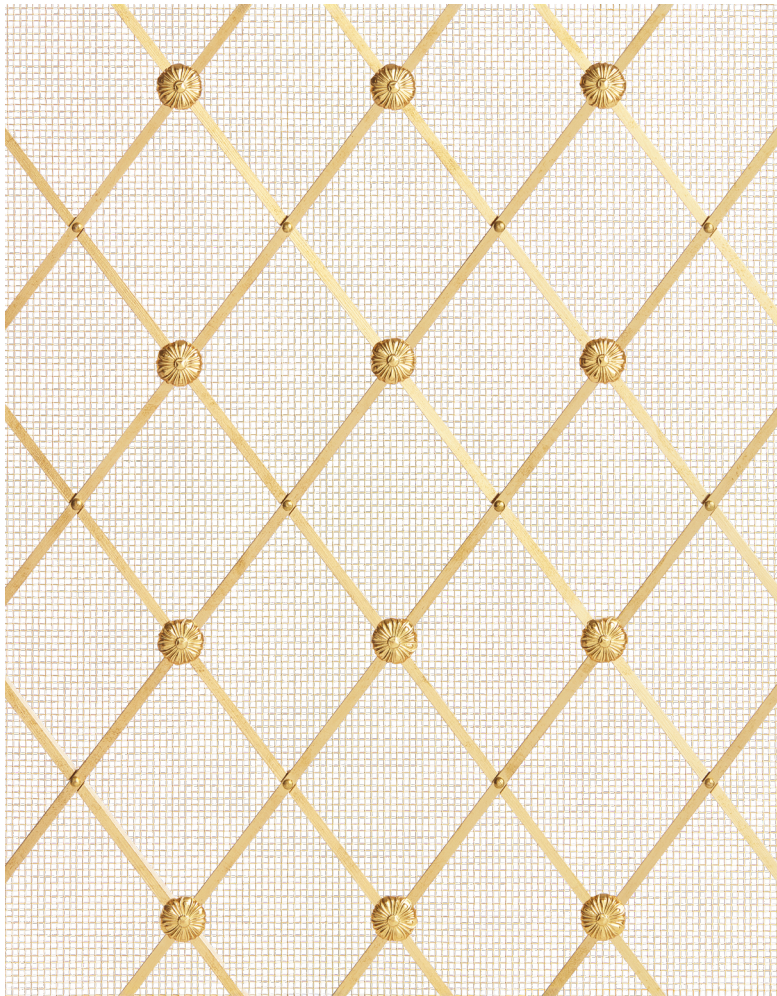
Air flow: Air flow refers to the amount of open area within a grille, which directly affects ventilation performance for heating and air conditioning systems.

Small Diamond 75% (excluding mesh)

Medium Diamond 79% (excluding mesh)

Large Diamond 84% (excluding mesh)

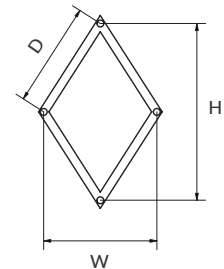
Please note that the addition of mesh backing will significantly reduce the overall air flow of the grille, additionally decreasing the air flow by approximately 58–65%, depending on the mesh selected.



Diamond options

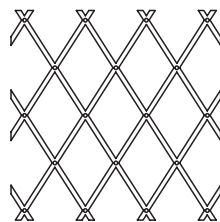
Available in three different diamond sizes, each is made from a 3.2mm square section brass bar and fitted to hold in place with decorative pins.

Width (W)	Height (H)	Diagonal Diameter (D)
33mm 1-5/16"	44mm 1-11/16"	25mm 1"
51mm 2"	64mm 2-1/2"	38mm 1-1/2"
70mm 2-3/4"	89mm 3-1/2"	54mm 2-1/8"

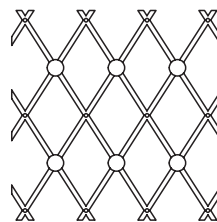


Rosette options

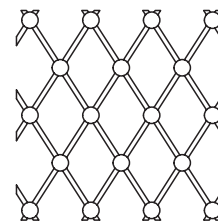
Available with a choice of plain or floral rosettes fitted to every crossover or alternating crossovers. Grilles can also be supplied without rosettes, leaving the pinheads visible for a more understated appearance. Selected grilles are also available with bespoke mixed finish combinations upon request.



No rosettes



Alternating rosettes



All rosettes

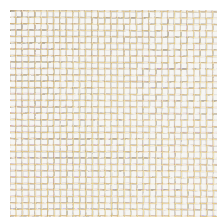
Mesh options

Our Mesh is commonly used as a backing for many of our decorative grilles, adding subtle texture while helping to conceal behind the panel.

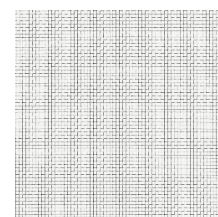
- Available cut to size
- Available in both Brass and Stainless Steel
- Finishes available on Brass material only



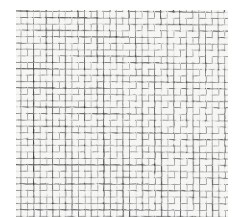
Fine Mesh Brass
Square holes 1mm internal
0.65mm thickness



Coarse Mesh Brass
Square holes 3mm internal
1.3mm thickness



Fine Mesh Stainless Steel
Square holes 1mm internal
0.65mm thickness



Coarse Mesh Stainless Steel
Square holes 3mm internal
1.3mm thickness